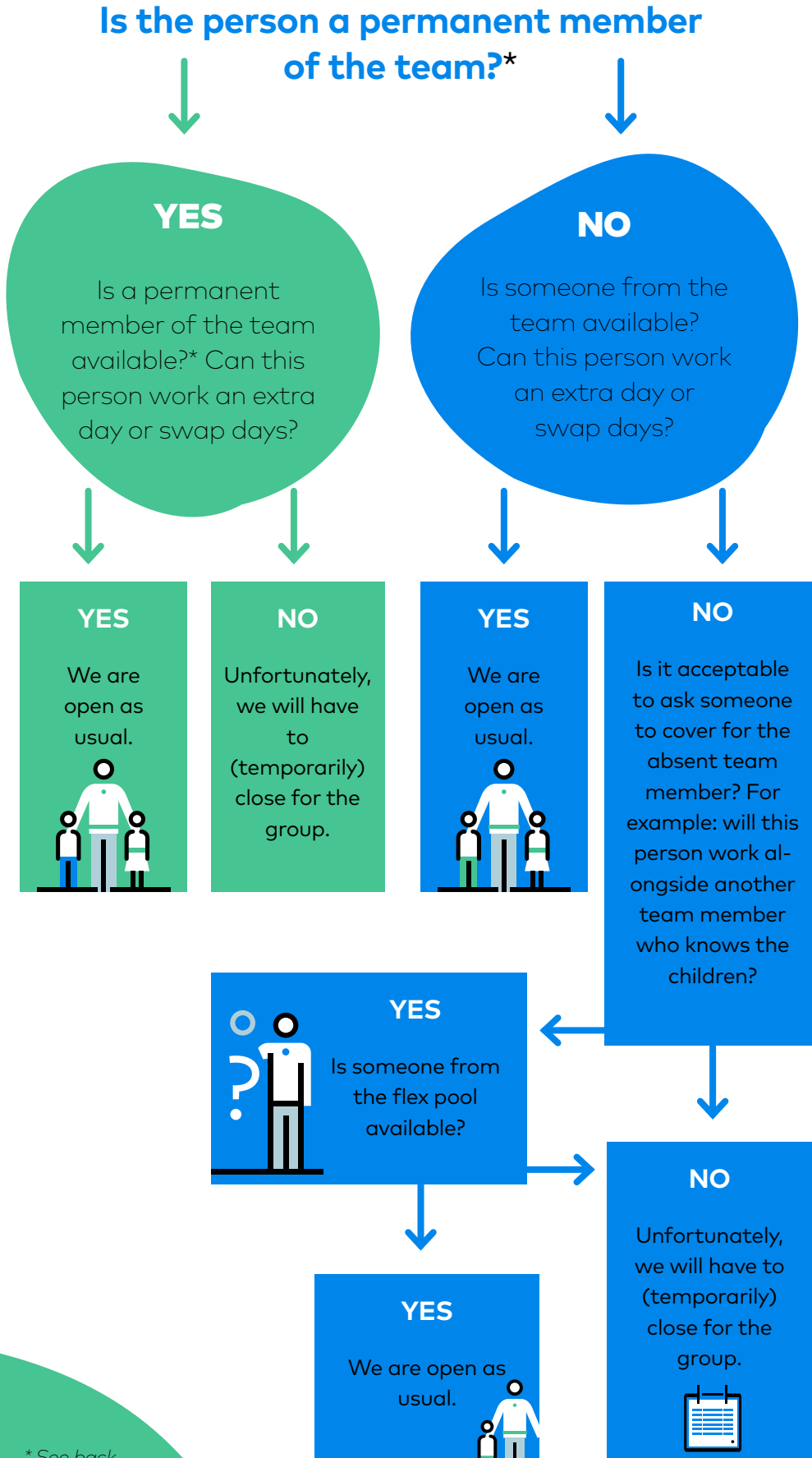


My child's group is closing temporarily. Why?

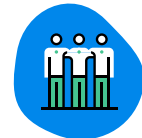
We never close unless there is a good reason. If a pedagogical assistant is absent, we use the following process:



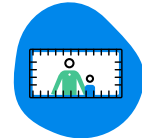
What is Korein doing to find new team members?



We collaborate with relevant educational training courses.
For instance, by offering work placements and apprenticeships.



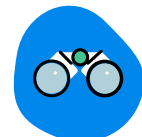
Recruitment
On our vacancy sites, through our own networks, on LinkedIn and other social media channels.



Big banners at almost every location.



Retraining pedagogical assistants
So they can be more versatile in their tasks and roles.



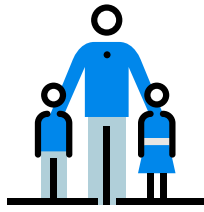
Planning far ahead
So that we can anticipate challenges and possibilities as soon as possible.

But also:
Recruiting via employment agencies.

* See back

Familiar face.

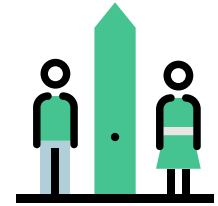
- Pedagogical assistant who knows the child and vice versa.
- At least one familiar face present in the child's group every day.
- Only two familiar faces for babies, and three familiar faces for the older groups.
- * On 1 July 2023, the Dutch Childcare Act ('Wet Kinderopvang') was amended in this regard:
The familiar-face criterion itself has not changed. However, childcare organisations may, in specific cases, temporarily assign a professional other than a familiar face in a group.



To 
safeguard the well-being of children, the government has set stipulations that childcare organisations must comply with.

Maximum number of children per group.

- There are regulations for the number of children that can be looked after by one team member.
- This number depends on the ages of the children.
- This number can be calculated using a calculation tool.
- The number of children per group is not allowed to deviate for more than three hours a day.



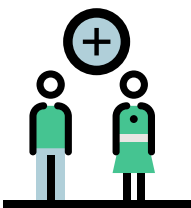
Combining groups.

Consider:

- Number of children and team members in the group.
- Number of children per square metre in the room.
- Children's ages.
- Presence of familiar faces.
- Agreements made with parents about care in 2nd core group.

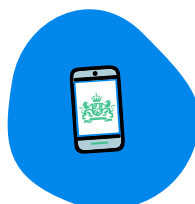
Want to know more?

Check the pedagogical work plan of your location on our website.



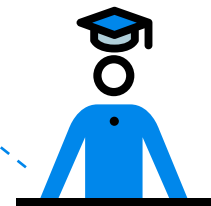
Would you like to find out more?

Go to [Rijksoverheid.nl](https://rijksoverheid.nl).
There is a [special page with information for parents](#).



Compensation.

You are not charged for days your childcare cannot take place due to closure. Please notify the Tax Authorities about this in time.
korein.com/en/compensation



Team members with the right knowledge and skills.

- Qualification requirements: not just anyone can work at a childcare centre.
- Only a third of team members are allowed to be work placement students or professionals in training.

I have a question, comment or complaint. Who can I contact?

Please send an email to info@korein.nl or call **040 - 294 89 89** (on weekdays from 08:30 until 12:30).